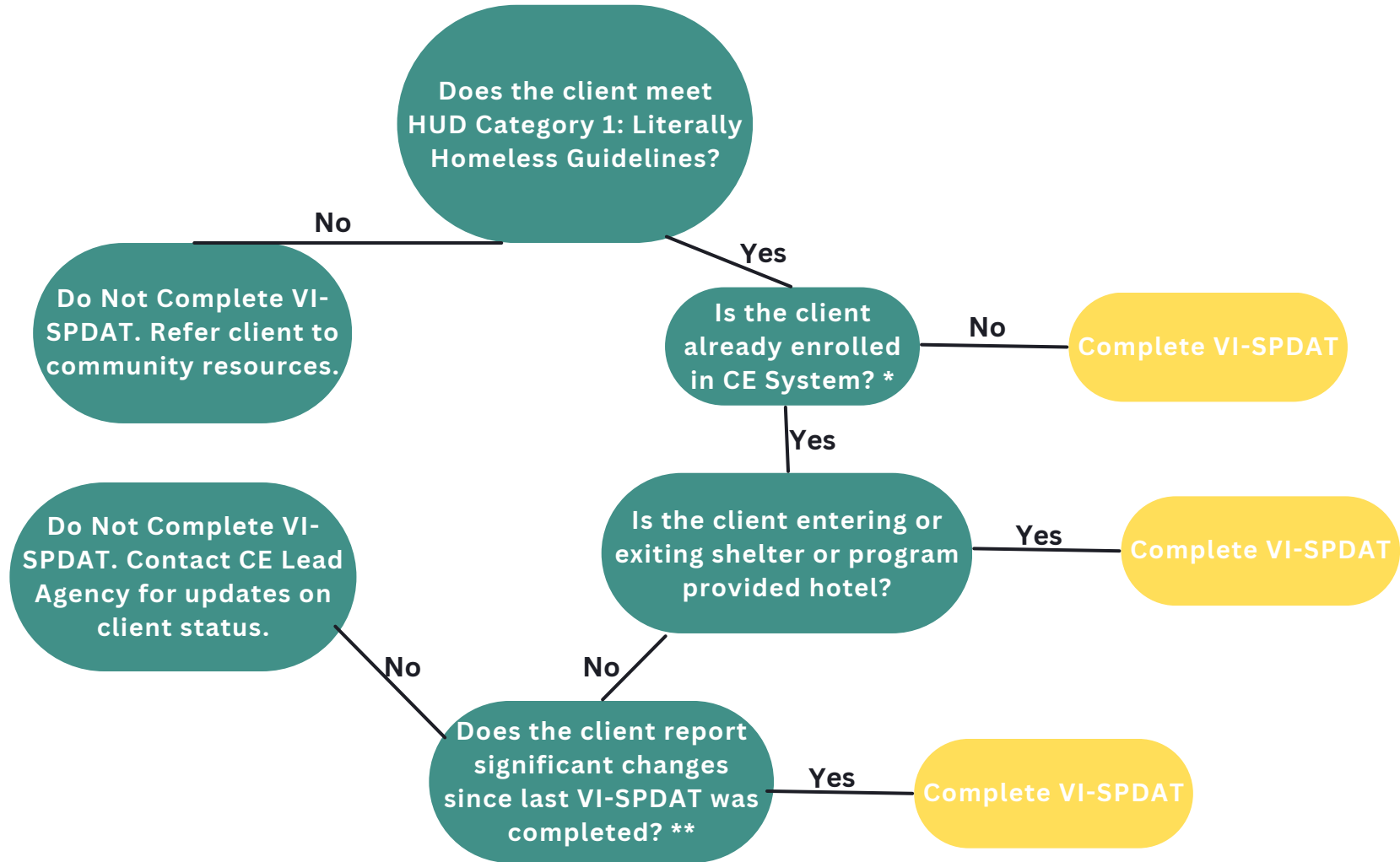


# When to Complete VI-SPDAT

Use this guide to determine when to complete a VI-SPDAT



\*Client CE Enrollment can be confirmed by checking for HMIS CE Program Entry or by emailing [byname@partnersendinghomelessness.org](mailto:byname@partnersendinghomelessness.org)

\*\* Individuals/Households may complete an updated VI-SPDAT when they experience a life event or changes that impacts their vulnerability or when new information is given to provider. This may include, but is not limited to:

- New health or disabling condition
- Change in cognitive functioning or ability to complete activities of daily living for self or household members
- Change in household composition
- Justice system involvement
- Child Protection Services involvement
- Income changes